

Job Name:

Schedule Reference:

Date:

OUTDOOR VRF SYSTEM FEATURES

- Single-phase outdoor unit with variable refrigerant flow (VRF) zoning technology
- Inverter-driven (variable speed) compressor
- Total refrigerant piping length of 492' (150 m)
- Connects up to 12 indoor units
- Uses CITY MULTI indoor units and Controls Network



PUMY-P60NKMU (-BS)



OPTIONAL PARTS

- Branch Joint (T-Branch).....CMY-Y62-G-E
- Header - Four-Branch.....CMY-Y64-G-E
- Header - Eight-Branch.....CMY-Y68-G-E
- Air Outlet Guide.....PAC-SG96SG-E
- Wind Baffle.....WB-PA3
- Drain Pan.....PAC-SH97DP-E
- Drain Socket.....PAC-SH71DS-E

UNIT OPTION

- Standard Model.....PUMY-P60NKMU
- Sea Coast (BS) Model.....PUMY-P60NKMU-BS

Specifications		Model Name
Unit Type		PUMY-P60NKMU (-BS)
Nominal Cooling Capacity	Btu/h	60,000
Nominal Heating Capacity	Btu/h	66,000
Operating Temperature Range	Cooling (Outdoor) *1	23° F ~ 115° F (-5° ~ +46° C) DB
	Heating (Outdoor)	-4° F ~ +60° F (-20° ~ +15° C) WB
External Dimensions (H x W x D)	In. / mm	52-11/16 x 41-5/16 x 13 (+1-3/16) / 1,338 x 1050 x 330 (+30)
External finish		Precoated Galvanized-steel Sheets
Net Weight	Lbs. / kg	313 / 142
Electrical Power Requirements	Voltage, Phase, Hertz	208 / 230V, 1-phase, 60Hz
Cooling Power Input	kW	4.80
Heating Power Input	kW	6.15
Cooling Current	A	21.5
Heating Current	A	27.6
Minimum Circuit Ampacity (MCA)	A	35
Recommended Fuse/Breaker Size	A	40
Maximum Fuse Size	A	42
Piping Diameter (Flared) (In. / mm)	Liquid (High Pressure)	3/8 / 9.52
	Gas (Low Pressure)	3/4 / 19.05
Indoor Unit	Total Capacity	50 to 130% of Outdoor Unit Capacity
	Model / Quantity	P06 to P72 / 1 to 12
Sound Pressure Levels	dB(A)	58/59
Fan		
Type x Quantity		Propeller Fan x 2
Airflow Rate	CFM	4,940
Compressor Operating Range	Cooling	38% to 100%
	Heating	29% to 100%
Compressor Type x Quantity		INVERTER-driven Scroll Hermetic x 1
Compressor Motor Output	kW	3.0
Refrigerant		R410A
Lubricant		FV50S
High-pressure Protection Device		High Pressure Switch
Compressor / Fan Protection Device		Compressor Thermo / Overcurrent Detection
Inverter Protection Device		Overheat / Voltage Protection
AHRI Ratings	EER	11.3 / 12.5
	SEER	16.5 / 16.7
	COP	3.70 / 3.14
Blue Fin Anti-corrosion Protection: Cellulose- and polyurethane-resin coating treatment applied to condenser coil that protects it from air contaminants; ≥1µm thick; Salt Spray Test Method - no unusual rust development to 960 hours.		

NOTES: *1 If PKFY-P06/08 indoor units are connected, then range is 50° F ~ 115° F (10° C ~ 46° C).

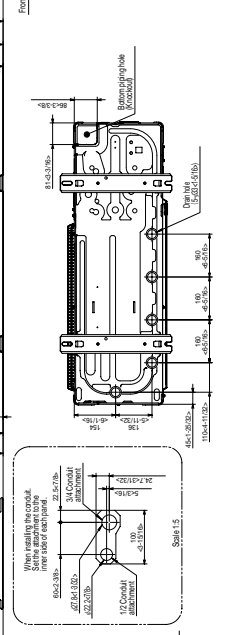
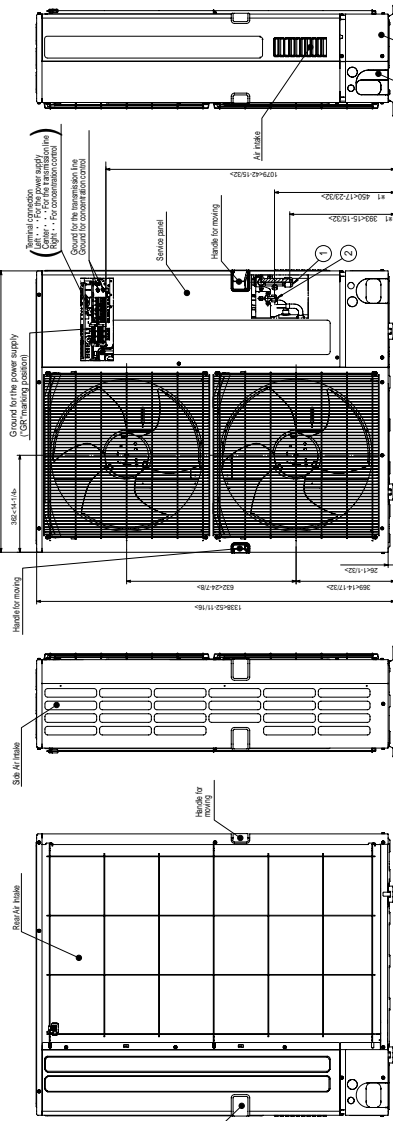
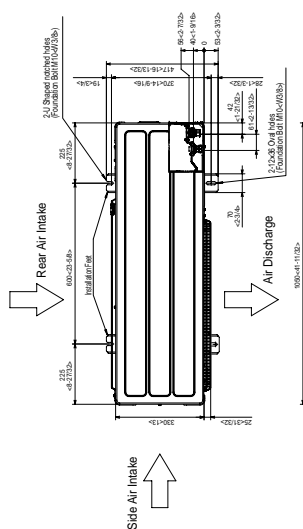
SEACOAST PROTECTION

- External Panel Base, External Front Panel, Pillar: Alloyed galvanized-steel sheets with thermoset polyester-resin coating on internal and external surfaces
- Compressor Cover: Galvanized-aluminum sheets with thermoset polyester-resin coating on internal and external surfaces
- Electrical Parts Box: Galvanized-aluminum sheets with thermoset polyester-resin coating on external surface
- Fan Motor Support: Galvanized-steel sheets with thermoset polyester-resin coating on internal and external surfaces
- Printed Circuit Board: Epoxy resin with polyurethane-coating on external surface

Model: PUMY-P60NKMU (-BS) – DIMENSIONS

PUMY-P60NKMU PUMY-P60NKMU-BS

Unit : mm <inch>



1 FREE SPACE (Around the unit)
The diagram below shows a basic example. Explanation of particular details are given in the installation manuals etc.

2 SERVICE SPACE
Dimensions of space needed for service access are shown in the below diagram.

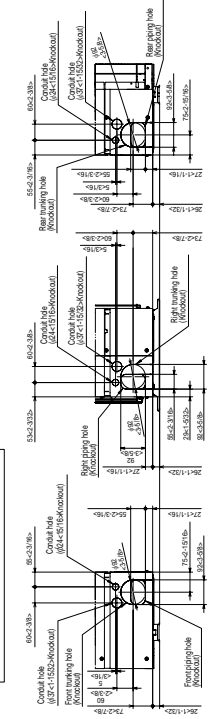
3 FOUNDATION BOLTS
Please secure the unit firmly with 4 foundation (M10x3/25) bolts. The bolts must be purchased locally.

4 PIPING-WIRING DIRECTIONS
Piping and wiring connections can be made from 4 directions: FRONT, RIGHT, REAR and BOTTOM.

Example of Notes

- ① . . . Refrigerant GAS pipe connection (FLARE) (1/2.06" O.D.F)
- ② . . . Refrigerant LIQUID pipe connection (FLARE) (3/32" (3.06F))
- ③ . . . Indication of STOP VALVE connection location.

Piping Knockout Hole Details



INVERTER



Intertek



COOLING & HEATING
Live Better

1340 Satellite Boulevard
Suwanee, GA 30024
Tele: 678-376-2900 • Fax: 800-889-9904
Toll Free: 800-433-4822
www.mehvac.com