



SPLIT-TYPE, HEAT PUMP AIR CONDITIONERS



September 2012

No. OCB502

# PARTS CATALOG

[Model name]  
<Outdoor unit>

[Service Ref.]

PUMY-P60NKMU

## PUMY-P60NKMU

PUMY-P60NKMU-BS

## PUMY-P60NKMU-BS

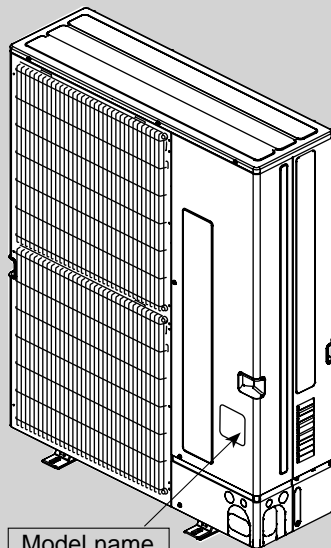
**Note :**

- RoHS compliant products have <G> mark on spec name plate.
- For servicing of RoHS compliant products, refer to RoHS PARTS LIST.

### CONTENTS

- 1. RoHS PARTS LIST ..... 2
- 2. OPTIONAL PARTS ..... 6

**SERVICE MANUAL (OCH502)**



Model name indication

OUTDOOR UNIT

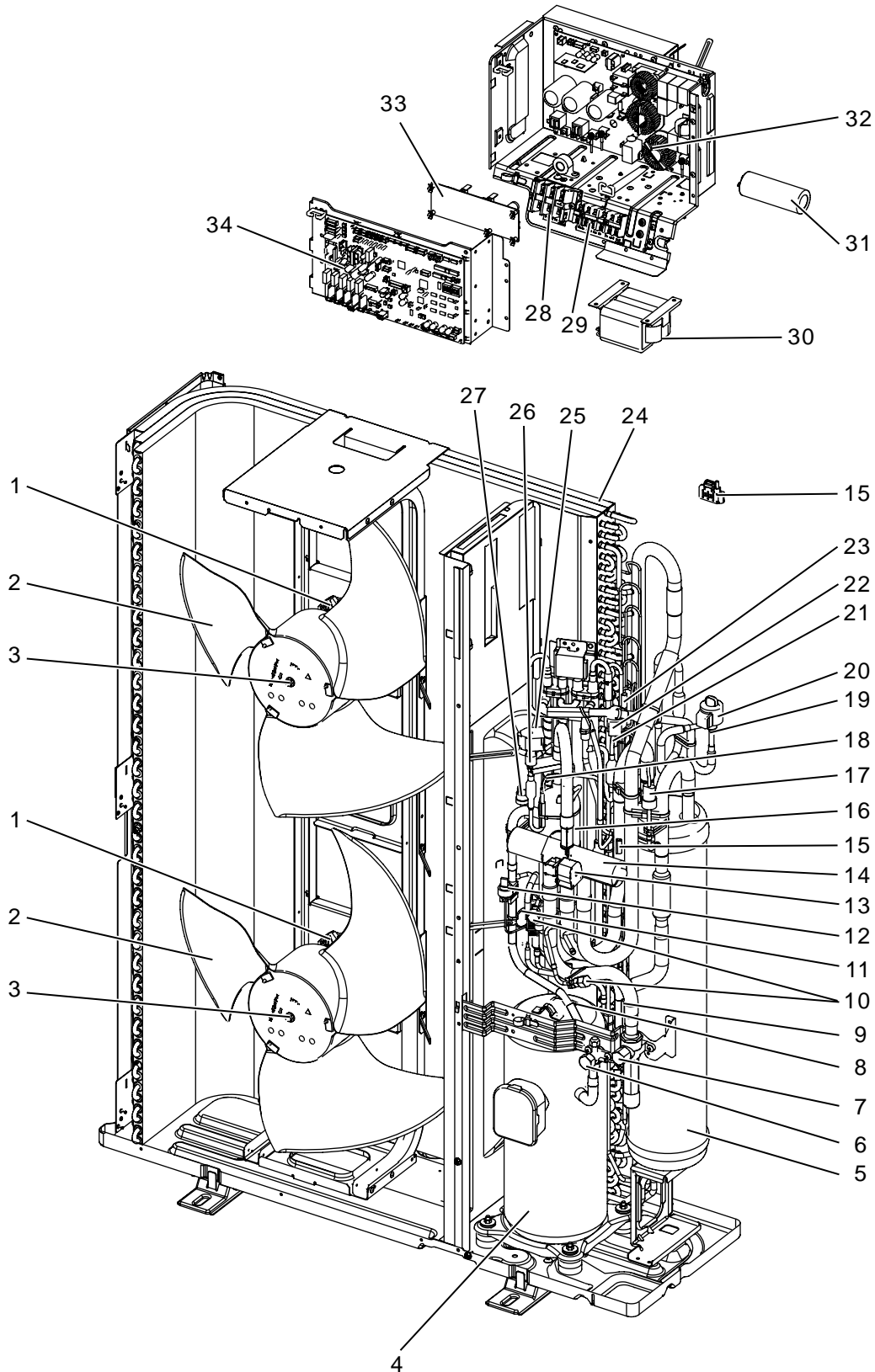


# CITY MULTI

1-1. FUNCTIONAL PARTS

PUMY-P60NKMU

PUMY-P60NKMU-BS



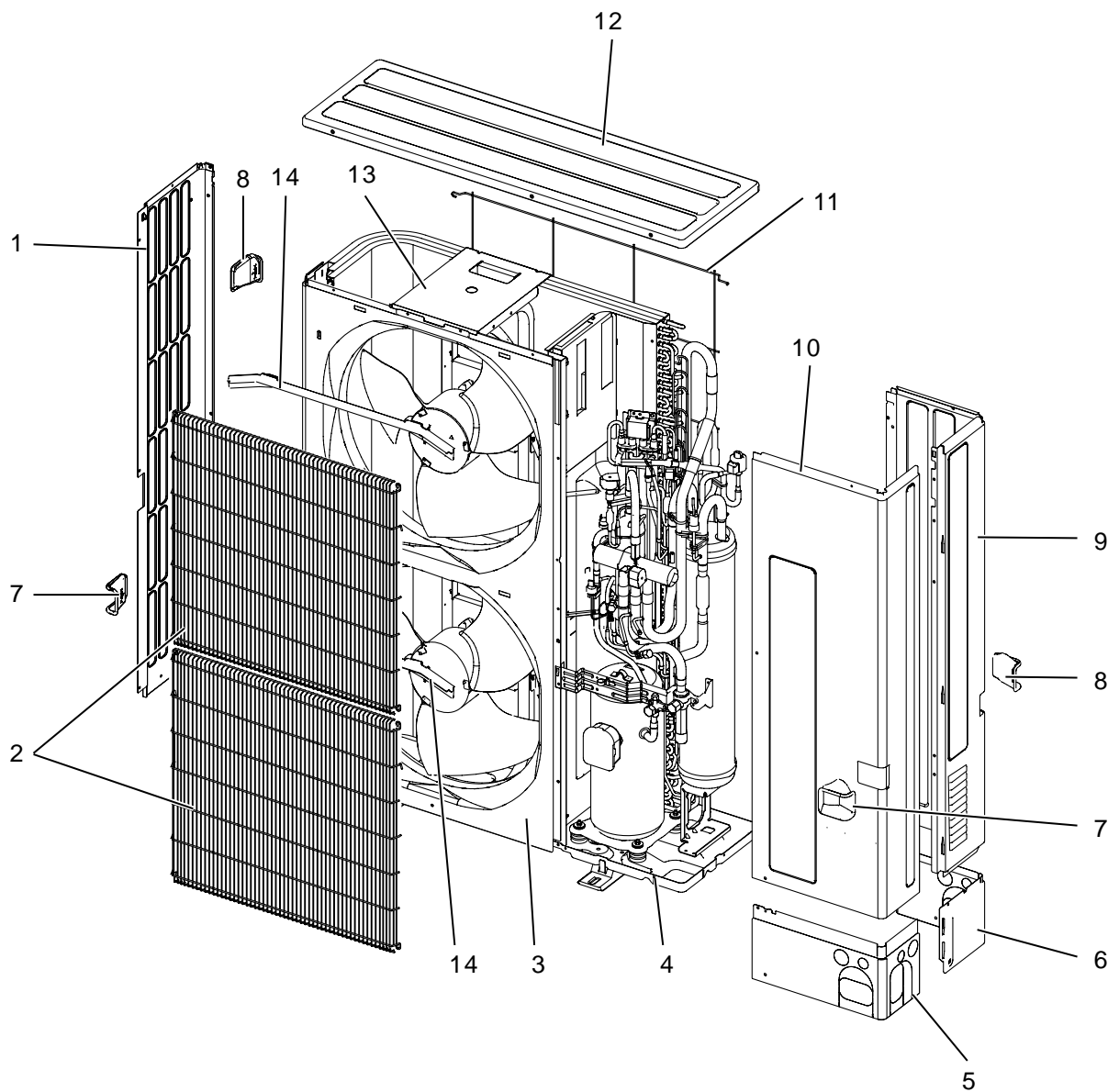
# RoHS PARTS LIST

Part numbers that are circled are not shown in the figure.

No.	RoHS	Part No.	Part Name	Specification	Q'ty/set	Remarks (Drawing No.)	Wiring Diagram Symbol	Recom- mended Q'ty
					PUMY-P60NKMU PUMY-P60NKMU-BS			
1	G	R01 E46 221	FAN MOTOR		2		MF1, 2	
2	G	R01 E10 115	PROPELLER FAN		2			
3	G	R01 E09 097	NUT		2			
4	G	T97 415 789	COMPRESSOR	ANB66FFZMT Including RUBBER MOUNT	1		MC	
5	G	R01 E67 440	ACCUMULATOR		1			
6	G	T7W E04 410	STOP VALVE	3/8 (LIQUID)	1			
7	G	T7W E07 411	BALL VALVE	3/4(GAS)	1			
8	G	R01 E28 201	THERMISTOR (COMPRESSOR)		1		TH4	
9	G	R01 H86 202	THERMISTOR (HIC PIPE)		1		TH2	
10	G	R01 E12 413	CHARGE PLUG		2			
11	G	R01 E33 425	CAPILLARY TUBE	$\phi 2.5 \times \phi 0.8 \times 800\text{mm}$	1			
12	G	R01 E07 208	HIGH PRESSURE SENSOR		1		63HS	
13	G	T7W E58 242	SOLENOID COIL(4-WAY VALVE)		1		21S4	
14	G	R01 E36 403	4-WAY VALVE		1			
15	G	R01 H88 202	THERMISTOR (LOW PRESSURE SATURATED, OUTDOOR)		1		TH6, 7	
16	G	R01 E14 490	OIL SEPARATOR		1			
17	G	R01 E02 209	LOW PRESSURE SENSOR		1		63LS	
18	G	R01 E32 425	CAPILLARY TUBE	$\phi 4.0 \times \phi 3.0 \times 500\text{mm}$	1			
19	G	R01 H27 401	LEV		1		(LEV-A)	
20	G	R01 E91 242	LEV COIL	CONNECTOR: WHITE	1		LEV-A	
21	G	R01 H32 401	LEV		1		(LEV-B)	
22	G	R01 H04 242	LEV COIL	CONNECTOR: RED	1		LEV-B	
23	G	R01 H87 202	THERMISTOR (OUTDOOR PIPE)		1		TH3	
24	G	R01 H37 408	HEAT EXCHANGER		1			
25	G	T7W E59 242	SOLENOID VALVE COIL(BYPASS VALVE)		1		SV1	
26	G	R01 E16 428	SOLENOID VALVE		1			
27	G	T7W E07 208	HIGH PRESSURE SWITCH		1		63H	
28	G	T7W 603 246	TERMINAL BLOCK	3P (L1, L2, GR)	1		TB1	
29	G	R01 E27 246	TERMINAL BLOCK	3P (M1, M2, S)	2		TB3,TB7	
30	G	T7W E23 259	REACTOR		1		DCL	
31	G	R01 E20 254	MAIN SMOOTING CAPACITOR		1		CB	
32	G	T7W E72 313	POWER CIRCUIT BOARD		1		P.B.	
33	G	R01 E04 311	M-POWER BOARD		1		M-P.B	
34	G	T7W F23 315	CONTROLLER BOARD		1		MULTI.B	
35	G	R01 E06 239	FUSE	250V 6.3A	2		F1, F2	

# RoHS PARTS LIST

## 1-2. STRUCTURAL PARTS PUMY-P60NKMU PUMY-P60NKMU-BS



# RoHS PARTS LIST

No.	RoHS	Part No.	Part Name	Specification	Q'ty/set		Remarks (Drawing No.)	Wiring Diagram Symbol	Recom- mended Q'ty
					PUMY-P60NKMU	PUMY-P60NKMU-BS			
1	G	R01 E30 662	SIDE PANEL (L)		1				
2	G	R01 E57 691	WIRE GRILLE		2				
3	G	R01 E23 668	FRONT PANEL		1				
4	G	R01 E45 686	BASE ASSY		1				
5	G	R01 E35 658	COVER PANEL (FRONT)		1				
6	G	R01 E36 658	COVER PANEL (REAR)		1				
7	G	R01 E03 655	HANDLE		2				
8	G	R01 E04 655	HANDLE		2				
9	G	T7W E36 661	SIDE PANEL (R)		1				
10	G	T7W E20 668	SERVICE PANEL		1				
11	G	R01 E10 698	REAR GUARD		1				
12	G	R01 E33 641	TOP PANEL		1				
13	G	R01 E48 130	MOTOR SUPPORT		1				
14	G	R01 E02 631	ICE GUARD		2				
15	G	T7W E04 617	CONDUIT PLATE		1				

**DRAIN SOCKET**

Part No.	PAC-SG61DS-E
----------	--------------

**AIR OUTLET GUIDE**

Part No.	PAC-SH96SG-E
----------	--------------

\* Need 2 pieces.

**AIR PROTECT GUIDE**

Part No.	PAC-SH95AG-E
----------	--------------

\* Need 2 pieces.

**CENTRALIZED DRAIN PAN**

Part No.	PAC-SH97DP-E
----------	--------------

**BRANCH PIPE (Joint)**

Part No.	NUMBER OF BRANCHING POINTS
CMY-Y62-G-E	2
CMY-Y64-G-E	4
CMY-Y68-G-E	8

**MITSUBISHI ELECTRIC CORPORATION**

HEAD OFFICE : TOKYO BLDG., 2-7-3, MARUNOUCHI, CHIYODA-KU, TOKYO 100-8310, JAPAN