



VSX13

1½- TO 5-TON

SPLIT SYSTEM AIR CONDITIONERS

SUBMITTAL DATA FORM

Job Name _____

Location _____

Purchaser _____

Order No. _____

Engineer _____

Unit No. _____

Model No. _____

Unit Designation _____

Performance Data Certified By: _____



Standard Features

- R-410A chlorine-free refrigerant
- Energy-efficient compressor
- Quiet condenser fan system
- Factory-installed liquid line filter drier
- Copper tube/aluminum fin coil
- Brass liquid and suction service valves with sweat connections
- Ground lug connection
- AHRI Certified; ETL Listed

Cabinet Features

- Sound control top designed for quiet operation
- Steel louver coil guard
- Heavy-gauge galvanized-steel cabinet
- Attractive Bahama Beige powder-paint finish with 500-hour salt-spray approval
- When properly anchored, meets the 2010 Florida Building Code unit integrity requirements for hurricane-type winds (Anchor bracket kits available.)



* Complete warranty details available from your local dealer or at www.goodmanmfg.com. To receive the 10-Year Limited Warranty, online registration must be completed within 60 days of installation. Online registration not required in California or Quebec.

PERFORMANCE DATA FOR SPLIT SYSTEM

OUTDOOR UNIT: _____

Cooling Performance

Total Capacity _____ MBH

Sensible Capacity _____ MBH

Outdoor Design TMP _____ °F DB / WB

Air Temp entering _____

Evaporator Coil _____ °F

Power Input Required _____ kW
(less blower motor)

INDOOR UNIT: _____

Heating Performance

Total Heating Capacity _____ kW
_____ BTU/h

Supply Air Blower Performance

Total Supply Air _____ CFM

Ext. Static Pressure _____ IWG

Blower Speed _____ RPM

Power Output Required _____ BHP

Motor Ratings _____ HP

Power Input Required _____ kW

Electrical Data

Power Supply _____

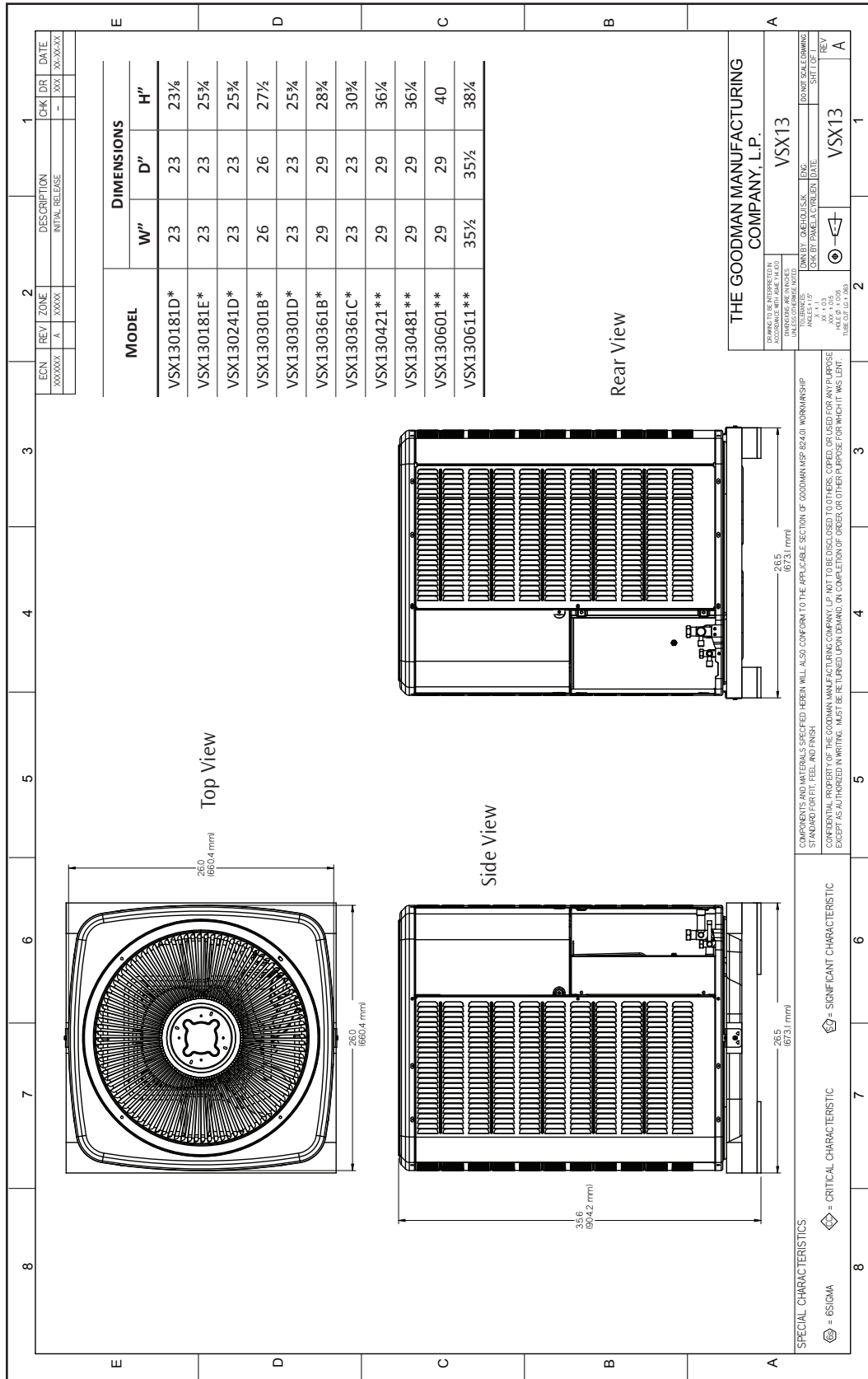
Total Unit Amps _____

Max Overcurrent Device:

Fuse _____ Breaker _____ Amps _____

NOTES

CERTIFIED DIMENSIONS



ACCESSORIES LIST

MODEL	DESCRIPTION	GSX13 018	GSX13 024	GSX13 030	GSX13 036	GSX13 042	GSX13 048	GSX13 060	SHIP WEIGHT	√
ABK-20	Anchor Bracket Kit *	X	X	X	X	X	X	X	1 Lb.	
ASC-01	Anti-Short Cycle Kit	X	X	X	X	X	X	X	1 Lb.	
CSR-U-1	Hard-start Kit	X	X	X	X	---	---	---	½ Lb.	
CSR-U-2	Hard-start Kit	---	---	---	---	X	X	X	1 Lb.	
CSR-U-3	Hard-start Kit	---	---	---	---	---	X	X	5 Lbs.	
FSK01A ¹	Freeze Protection Kit	X	X	X	X	X	X	X	1 Lb.	
LAKT01A	Low-Ambient Kit	X	X	X	X	X	X	X		
LSK01A ²	Liquid Line Solenoid Kit	X	X	X	X	X	X	X	1 Lb.	
TX2N4 ²	TXV Kit	X	---	---	---	---	---	---	2 Lbs.	
TX3N4 ²	TXV Kit	X	X	X	X	---	---	---	2 Lbs.	
TX5N4 ²	TXV Kit	---	---	---	---	X	X	X	2 Lbs.	

* Contains 20 brackets; four brackets needed to anchor unit to pad

¹ Installed on indoor coil

² Field-installed, non-bleed, expansion valve kit: Condensing units and heat pumps with reciprocating compressors require the use of start-assist components when used in conjunction with an indoor coil using a non-bleed thermal expansion valve refrigerant metering device or liquid line solenoid kit.

